

CONNECTING OUR COOPERATIVE COMMUNITIES

BLACKFOOT'S INVESTMENTS DELIVER HIGH SPEED INTERNET

Based on Blackfoot's Cooperative Service Area...



Western Montana

[Service Area Population Density¹]

2 people / square mile



Connecting a home with high-speed Internet is typically a rural area with fewer neighbors.

Compared to a more urban city setting...

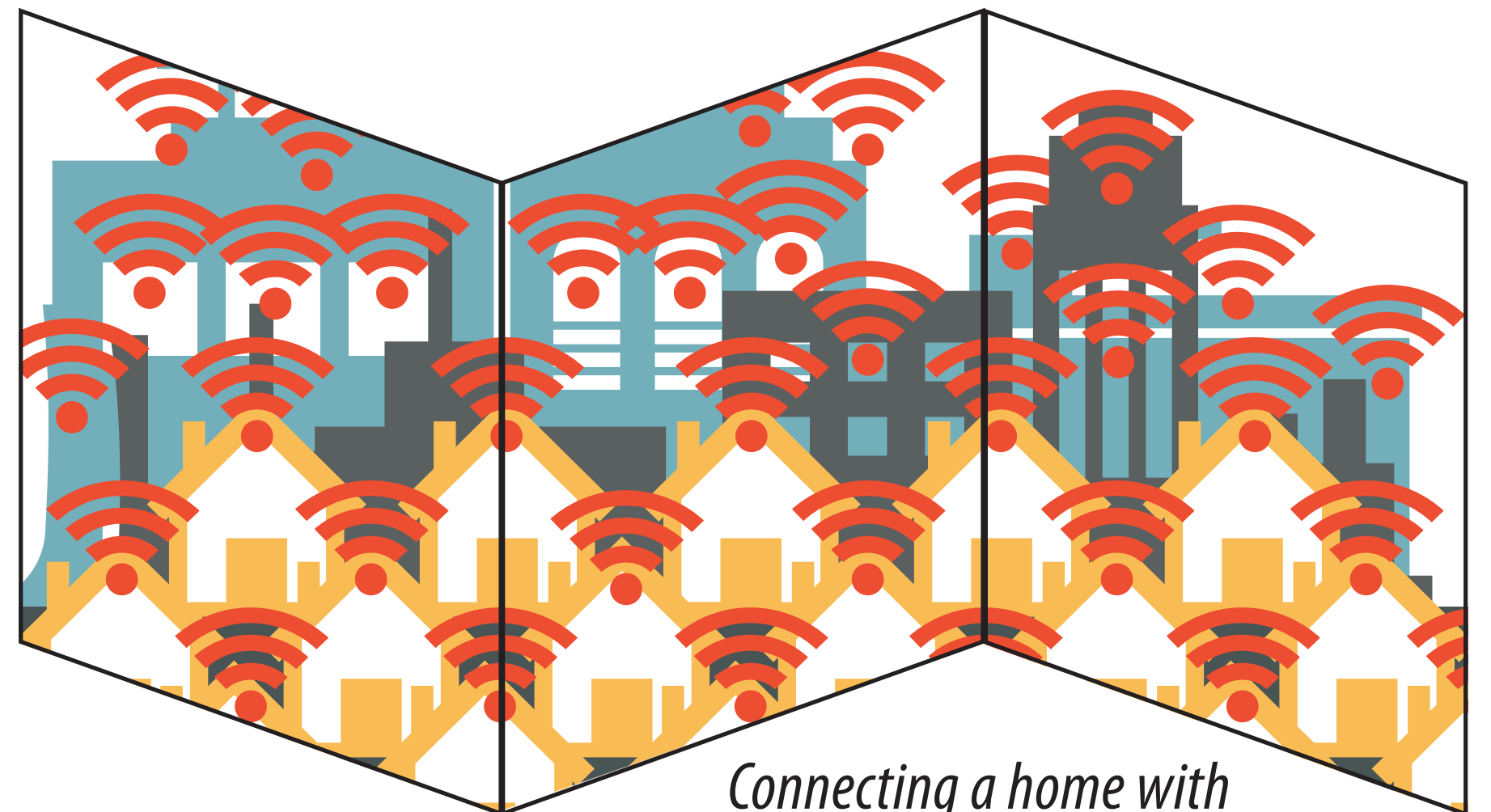


Seattle

[Seattle Population Density²]

7,782 people / square mile

(That's nearly 4,000 times more people per square mile!)



Connecting a home with high-speed Internet is typically an urban, highly populated area.

We love living in Montana, and all the Big Sky State has to offer. Our rural setting is wide open with no crowds – but it also means fewer people to share in technology expenses.

Blackfoot's service area spans **6,500 square miles** across Western Montana, keeping our rural communities connected.

WE SERVE OVER

50
COMMUNITIES

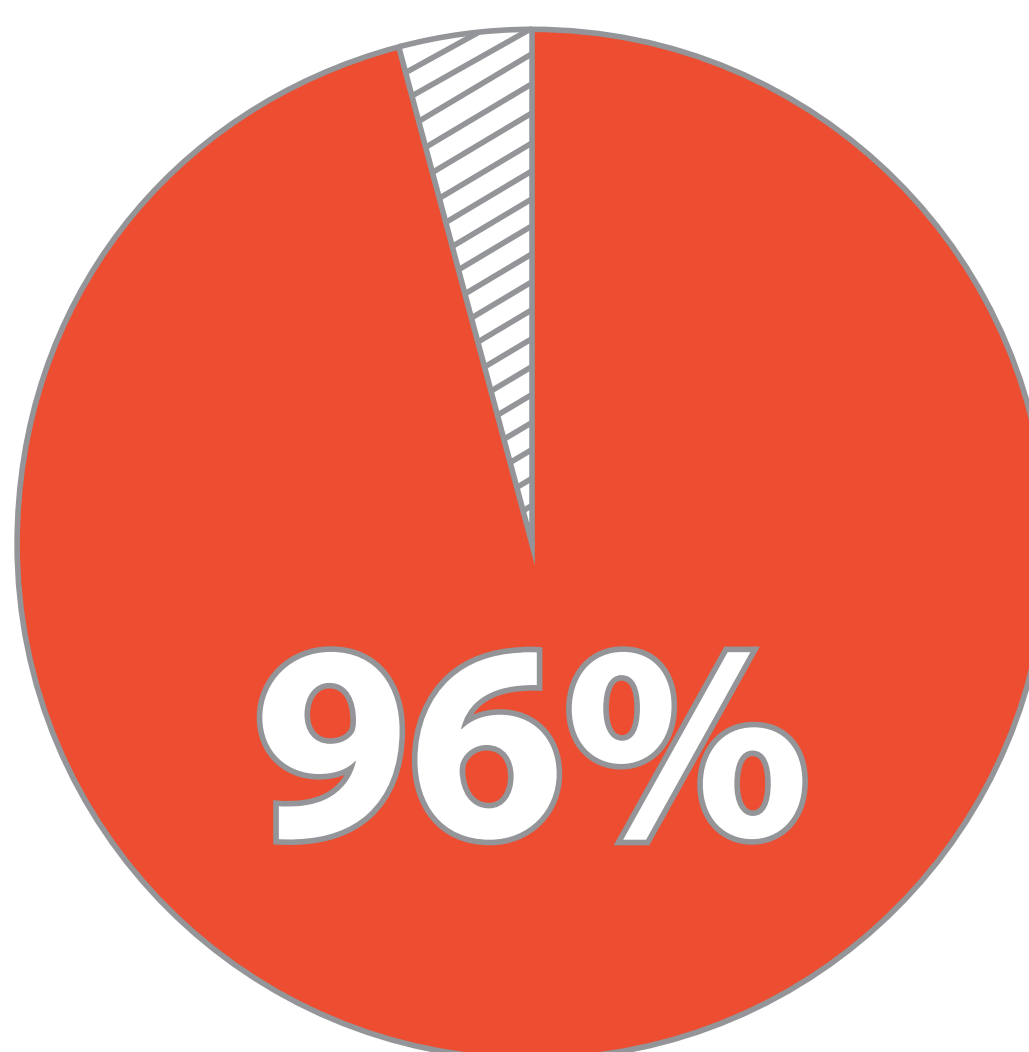
40
SCHOOLS

1,400
BUSINESSES

10,300
HOMES

Blackfoot's investments to maintain our rural service areas includes **4,800 miles** of copper line and **980 miles** of fiber.

BLACKFOOT SPEEDS



of Blackfoot's Cooperative customers can get high speed Broadband Internet in their rural location!³

Blackfoot is your local partner with **direct access** to many popular web content providers and we deliver the **fiber backbone** for area cell service.

DIRECT CONNECTIONS

Blackfoot has many Internet Peering Partners, including some of the most popular websites, like Netflix, Google and Facebook. We're able to provide our customers direct access to their content, resulting in a faster connection and better user experience. Blackfoot also delivers fiber to 19 cell towers in Western Montana, enabling cell phone data and phone connections.



¹ Based on the number of Blackfoot Telephone Cooperative customers throughout our service area, including Alberton, Alberton South, Alta, Arlee, Avon, Charlo, Clinton, Condon, Dixon, Drummond, Haugan, Noxon, Ovando, Philipsburg, Plains, Potomac, Powell, ID, St. Ignatius, St. Regis, Seeley Lake, Superior and Thompson Falls.

² Statistics from www.censusreporter.org.

³ Blackfoot uses the same technology that is used by national broadband providers.